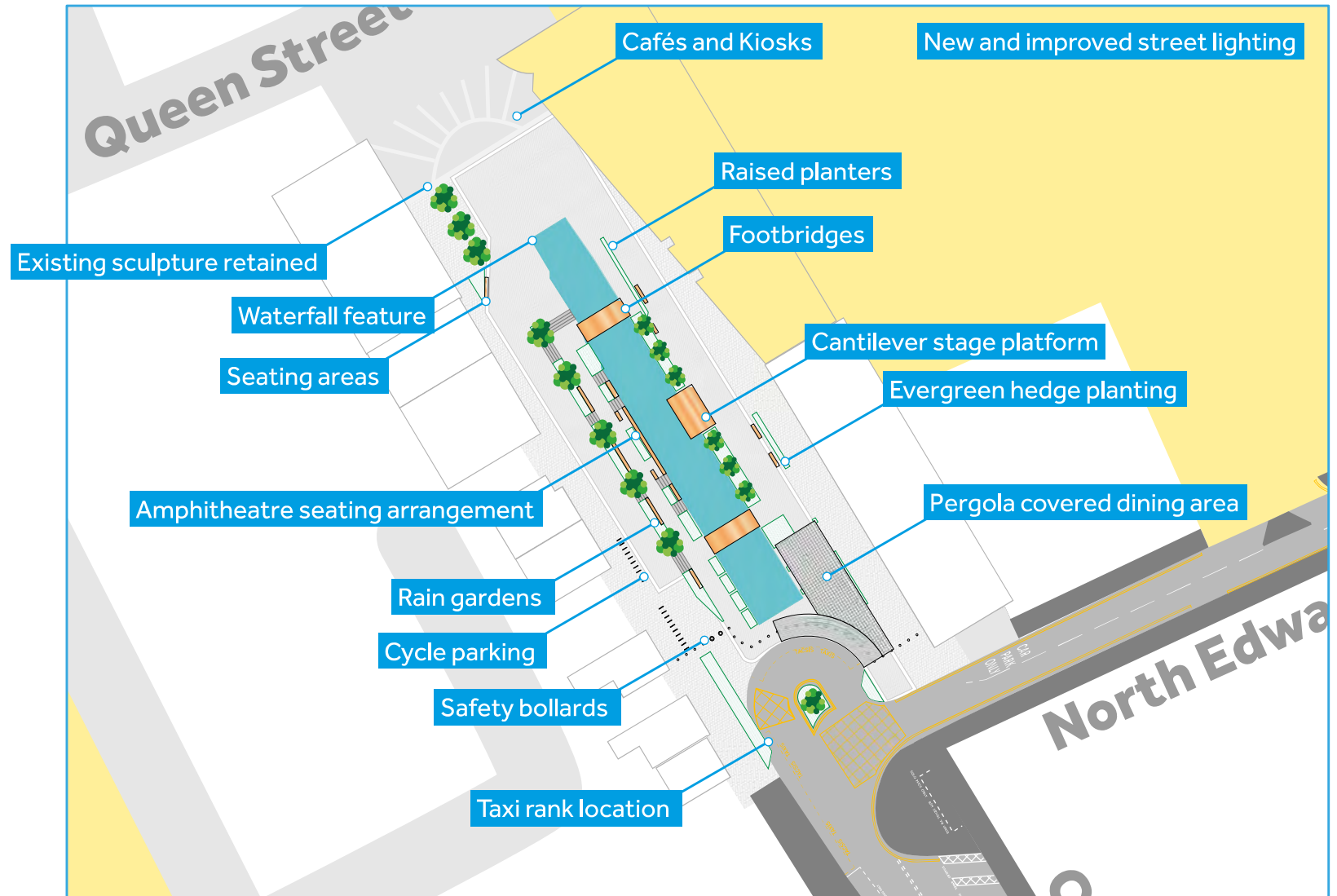


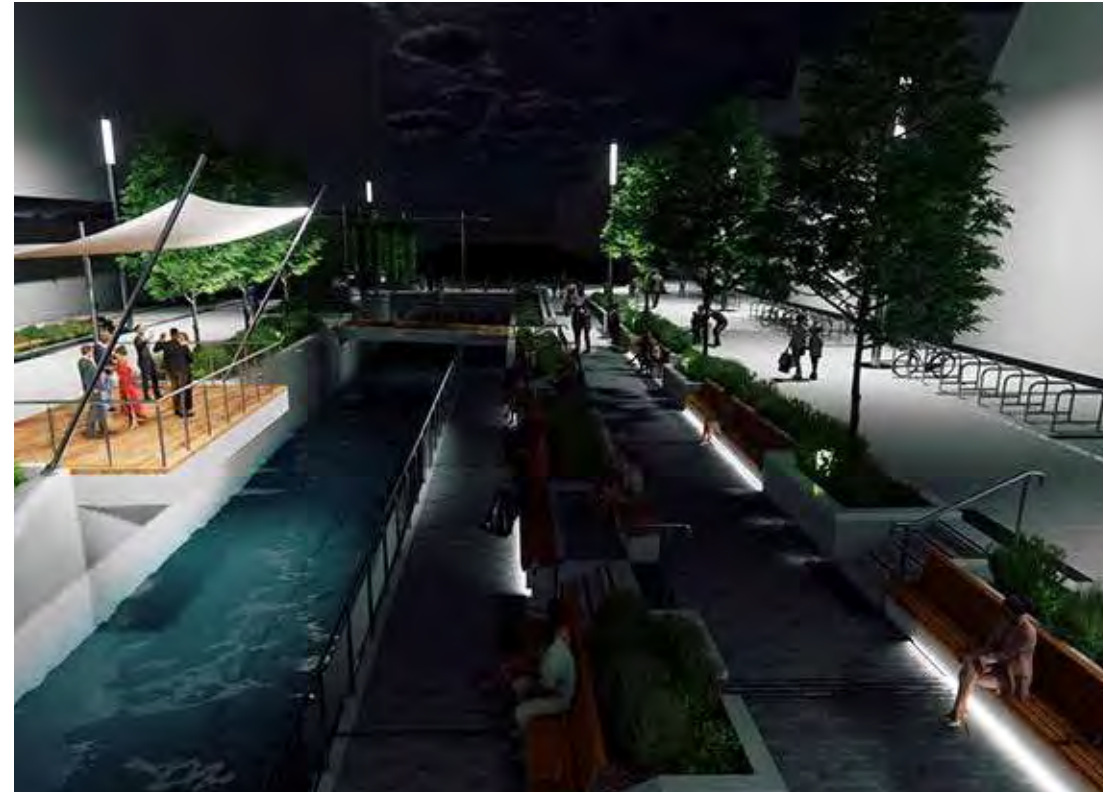
# The Canal Quarter - Phase 1

Following consultation in May 2019 as part of the Council's Clean Air Plans and engagement with stakeholders the City Centre East scheme has been modified to include The Canal Quarter.



# The Canal Quarter - Phase 1

- Restoration of a section of the Dock feeder canal into a welcoming and green public realm.
- Vibrant planting including a range of all year flora, trees and rain gardens to support the SuDS infrastructure.
- Amphitheatre style seating arrangements.
- AI fresco dining and socialising areas.
- Outdoor seating amongst the planting and with waterway views and sounds.
- Taxi rank facility located at the junction with North Edward Street.
- Bridges and Cantilever platforms over the canal.
- Waterfall feature.
- Cycle parking at southern end.



*Visualisation Only*

*\*Any structures such as containers/cafes etc will be subject to planning approval.*





# The Canal Quarter - Phase 1

- Restoration of a section of the Dock feeder canal into a welcoming and green public realm.
- Vibrant planting including a range of all year flora, trees and rain gardens to support the SuDS infrastructure.
- Amphitheatre style seating arrangements.
- AI fresco dining and socialising areas.
- Outdoor seating amongst the planting and with waterway views and sounds.
- Taxi rank facility located at the junction with North Edward Street.
- Bridges and Cantilever platforms over the canal.
- Waterfall feature.
- Cycle parking at southern end.



Visualisation Only

*\*Any structures such as containers/cafes etc will be subject to planning approval.*

